

An aerial photograph of a busy port at sunset. A large blue and red container ship is docked at a pier, surrounded by yellow gantry cranes. The sky is filled with golden light from the setting sun, and a city skyline is visible in the background. The water is calm, reflecting the light. A small tugboat is visible near the ship.

Navigation & Piloting

Trelleborg Marine & Infrastructure

June 2023

Agenda

- I. Company Overview
- II. Maritime Pilot Needs
- III. SafePilot Solutions:
 - i. SafePilot Pro
 - ii. SafePilot Offshore
 - iii. SafeCaptain
 - iv. SafeTug
 - v. SafeCrane
- IV. Hardware Range
- V. Buy or Lease?



Trelleborg Marine & Infrastructure

Business unit overview



6

Factories



5

Technical Centers



~1000

Employees



Trelleborg Marine & Infrastructure

Business unit overview



6

Factories



5

Technical
Centers



~1000

Employees



Oil & Gas
Transfer



Marine
Systems



Navigation &
Piloting



Marine
Construction



Infrastructure

N&P Milestones



1988

Marimatech was founded.
Hydrographic survey equipment and software



1995

Docking & Mooring product line started



1998

First PPU introduced

2013

SafePilot introduced



2017

Docking & Mooring production closed down



2016

Marimatech acquired by Trelleborg



2018 ➤

Sole focus on Navigation and Piloting

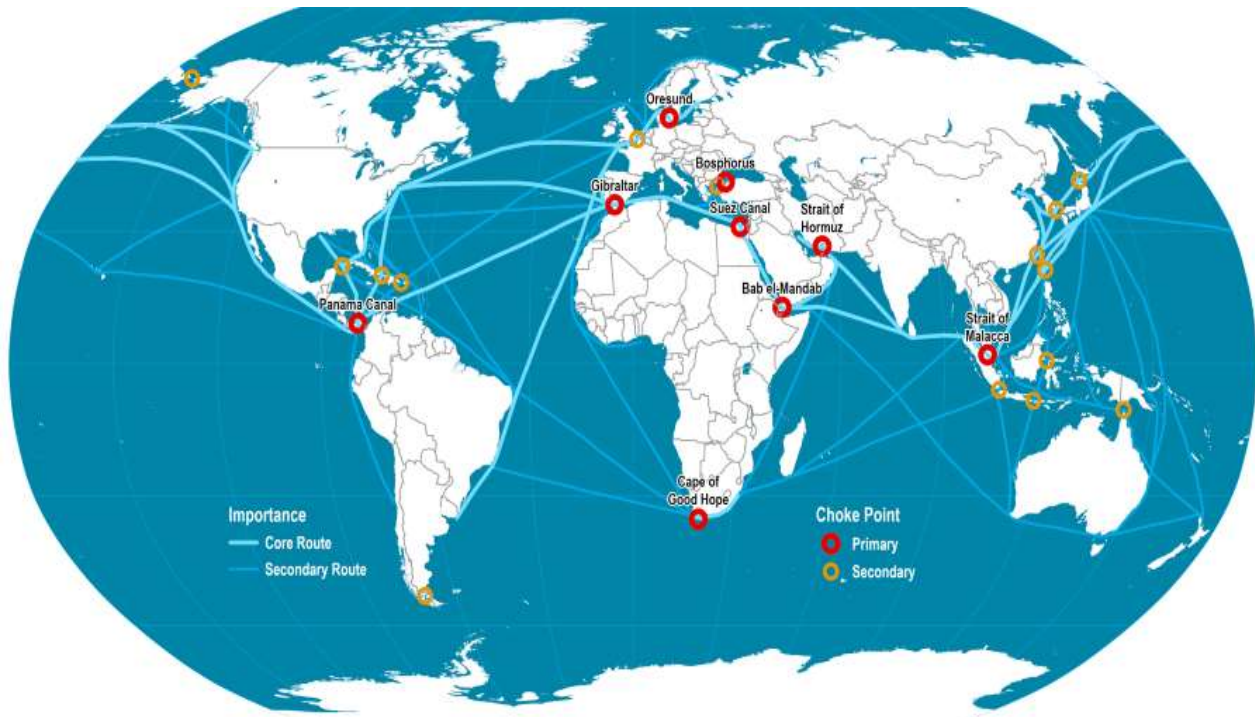


Trelleborg Marine & Infrastructure

A pioneer in navigation and piloting solutions

25+
years as
a pioneer







Global maritime industry

Overview

Key facts

90%
of global trade
is seaborne
(~850 ports)

+160%
TEU* capacity of
container vessels
since 2000

Demand drivers



Outdated port
infrastructure



Increasing
vessel size



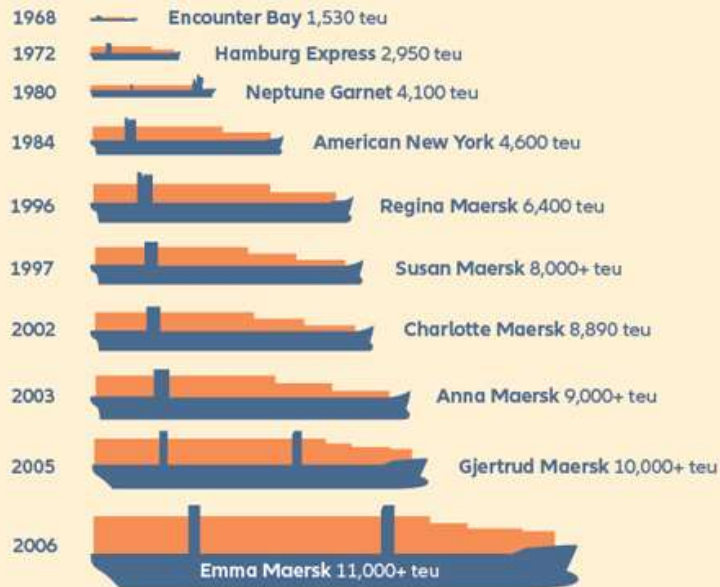
Quicker
turnaround



Sustainability

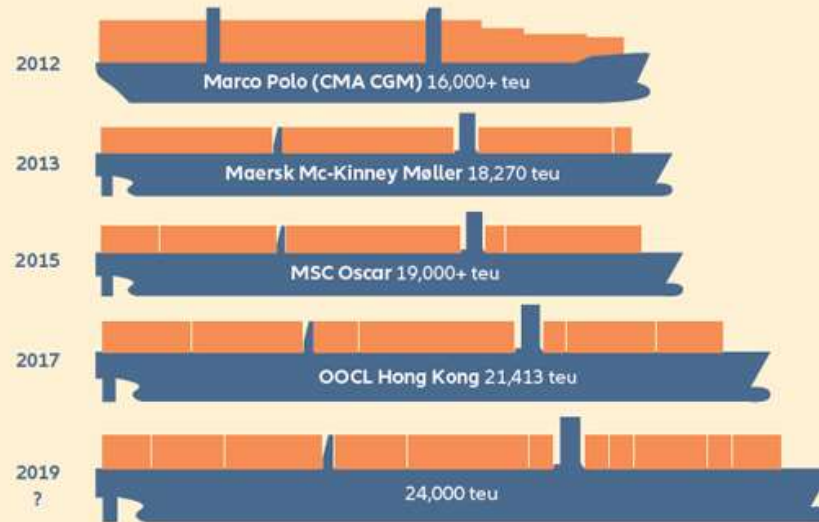
50 Years of Container Ship Growth

50 YEARS OF CONTAINER SHIP GROWTH



Approximate ship capacity data: Container-transportation.com; AGCS

Container-carrying capacity has increased by around 1,500% since 1968 and has almost doubled over the past decade



Source: Allianz Global Corporate & Specialty (AGCS)

Maritime Pilot

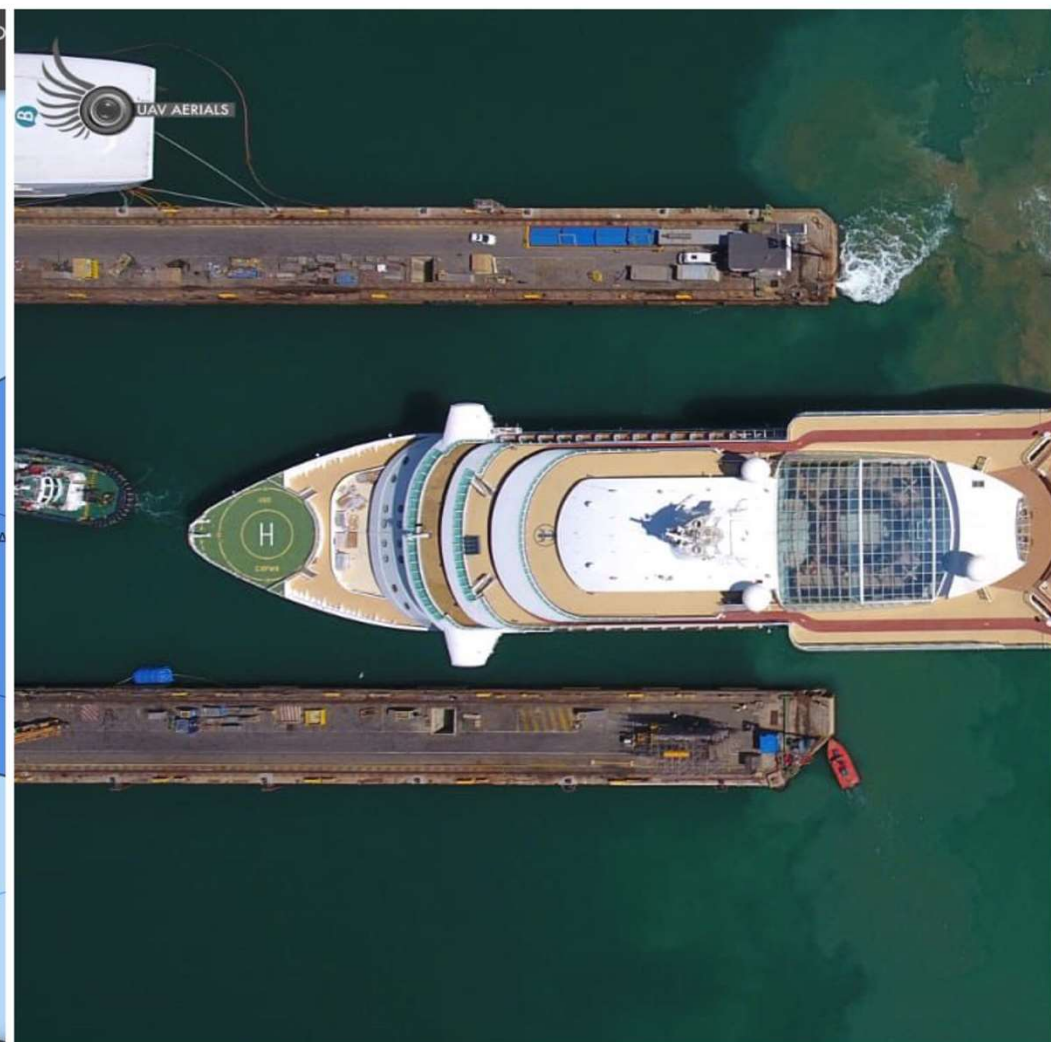
The pilot's main role is **handling ships on and off the port wharfs and facilities and ensuring the safe transit of shipping in and out of port during what is recognized as the high-risk element of a ship's passage.**



Maritime Pilot

The pilot's main role is **handling ships on and off the port wharfs and facilities and ensuring the safe transit of shipping in and out of port during what is recognized as the high-risk element of a ship's passage.**

- Level of independency needed?
- How many Transit / How busy?
- Can you use vessel instrument – Heading?
- How long is each transit?
- What is the level of accuracy needed?
- LNG tanker?
- Is there corrections available?
- Do you need UKC information?



What we offer

Hardware



- PPU, different models
- Solution determines what's necessary

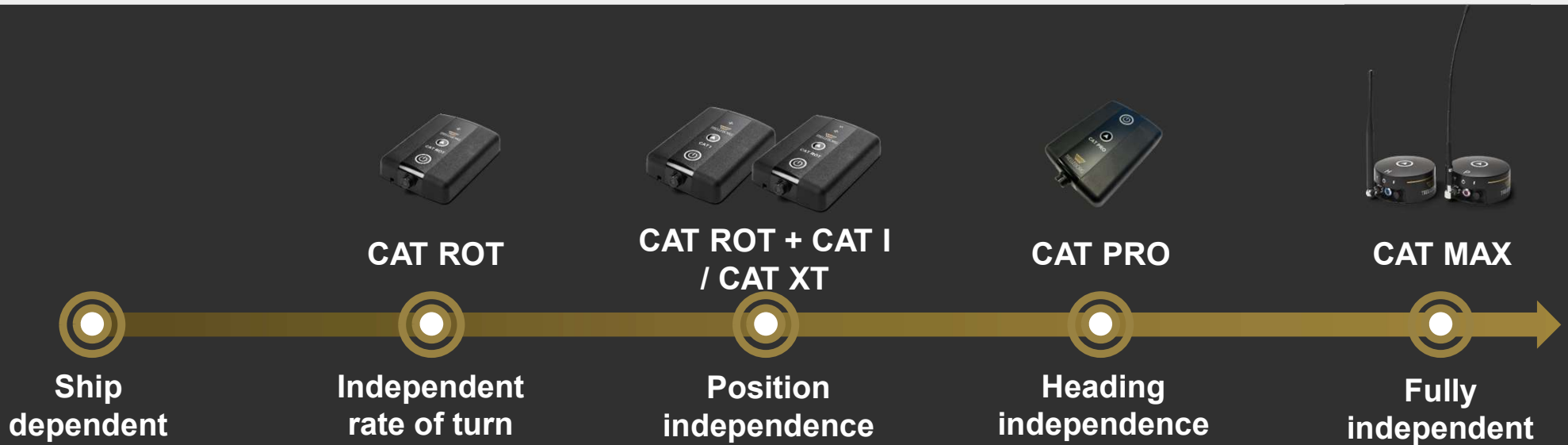
Software



- Modules includes navigation data, planning function, route, arrival times, recordings, chart handling, predictions and history.
- User-friendly format direct to iPad or Apple Watch.

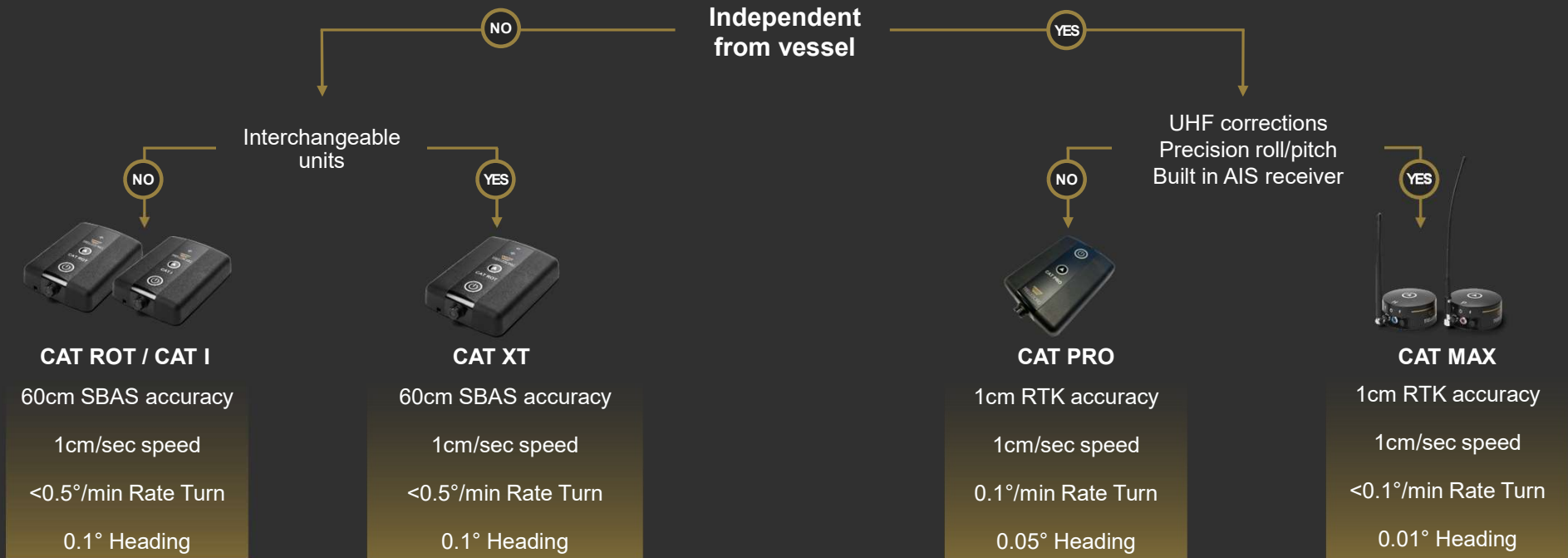
SafePilot

Choosing the right solution



SafePilot

Choosing the right solution



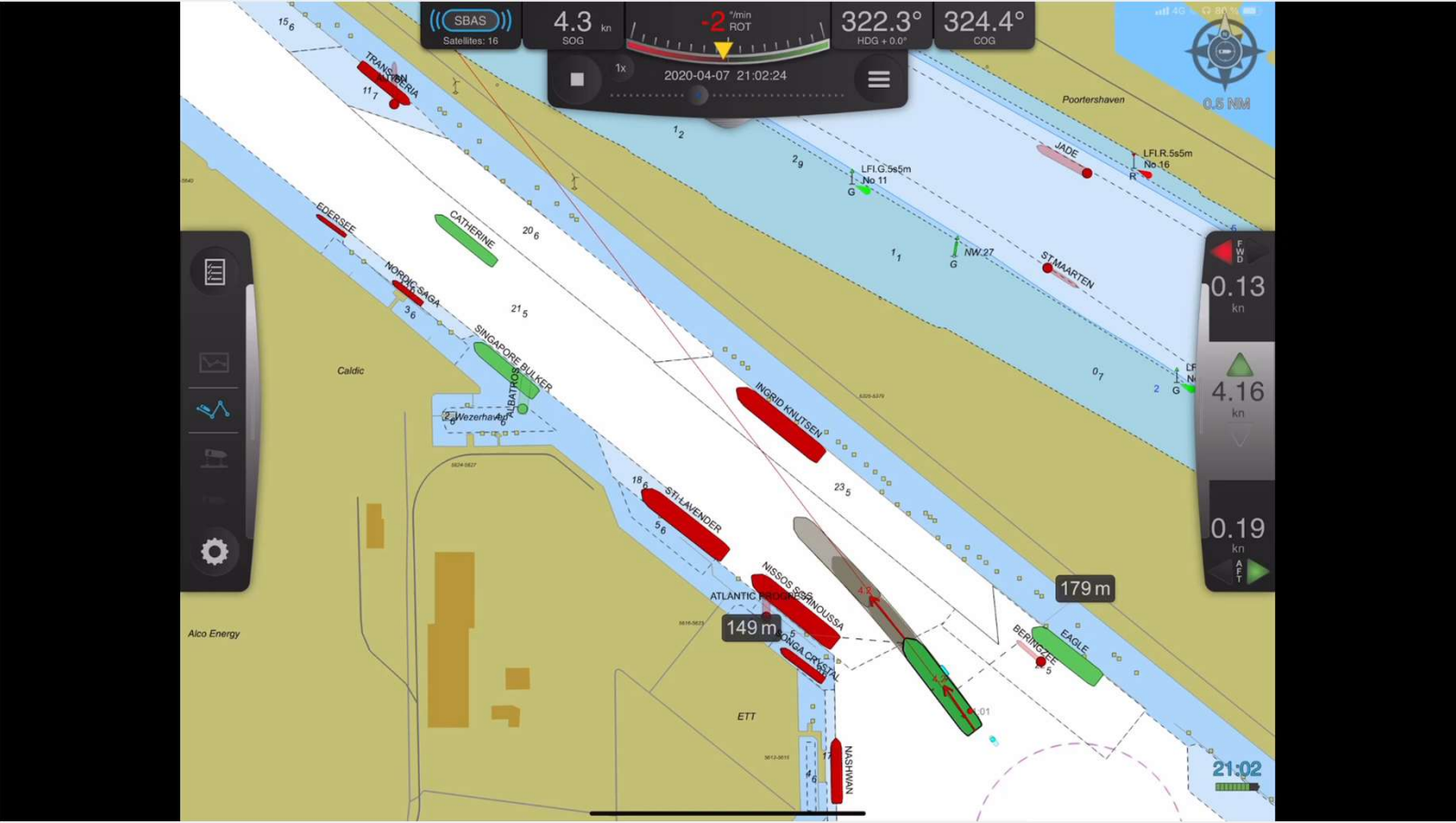
Overview SafePilot Pro



- Designed for pilots – by pilots
- Global market – thousands of pilots around the world
- Context based – focus on the current operation
- Modules – customized for each operation



CAT PRO Modules – River / Channel Navigation

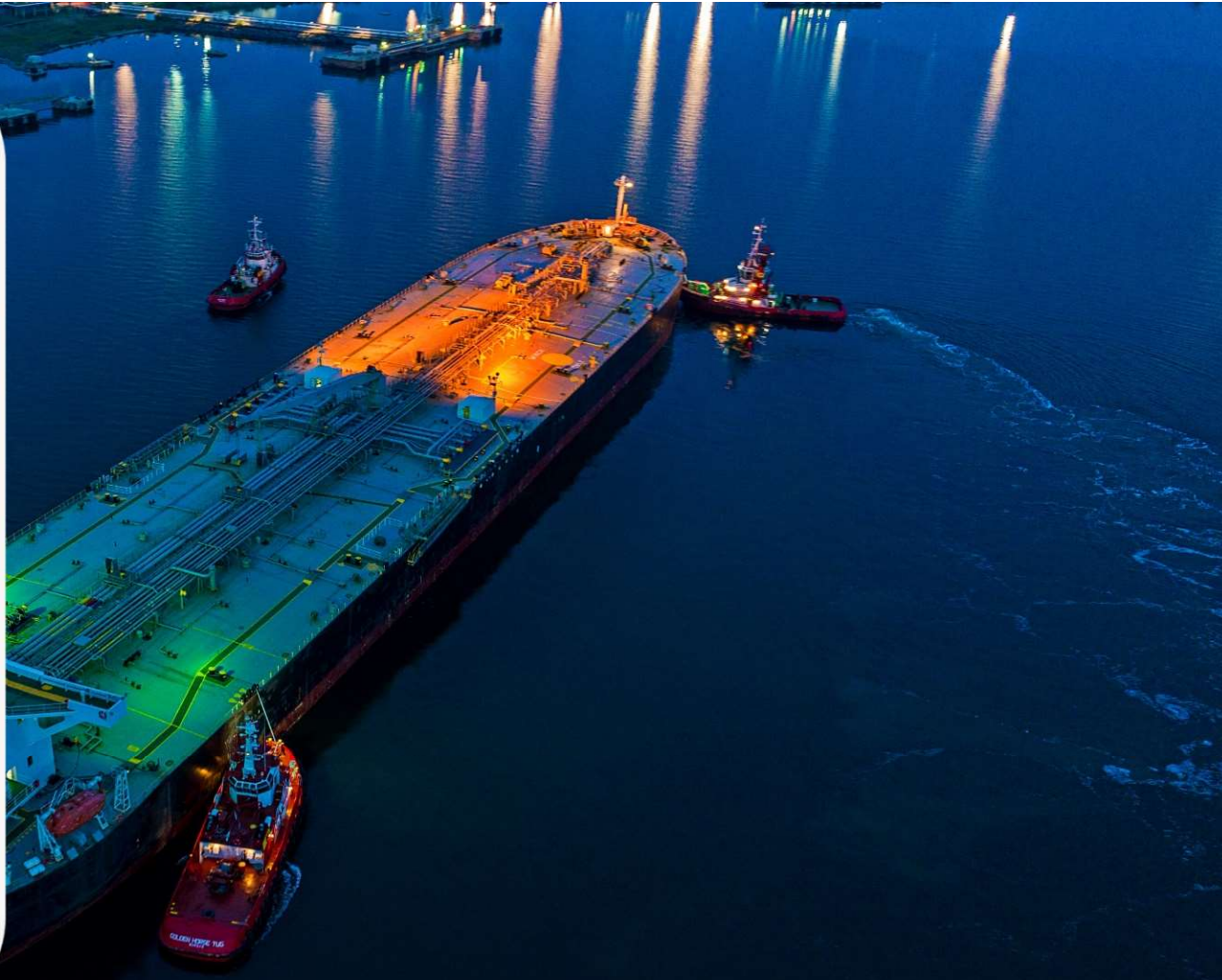


CAT PRO Modules – Docking



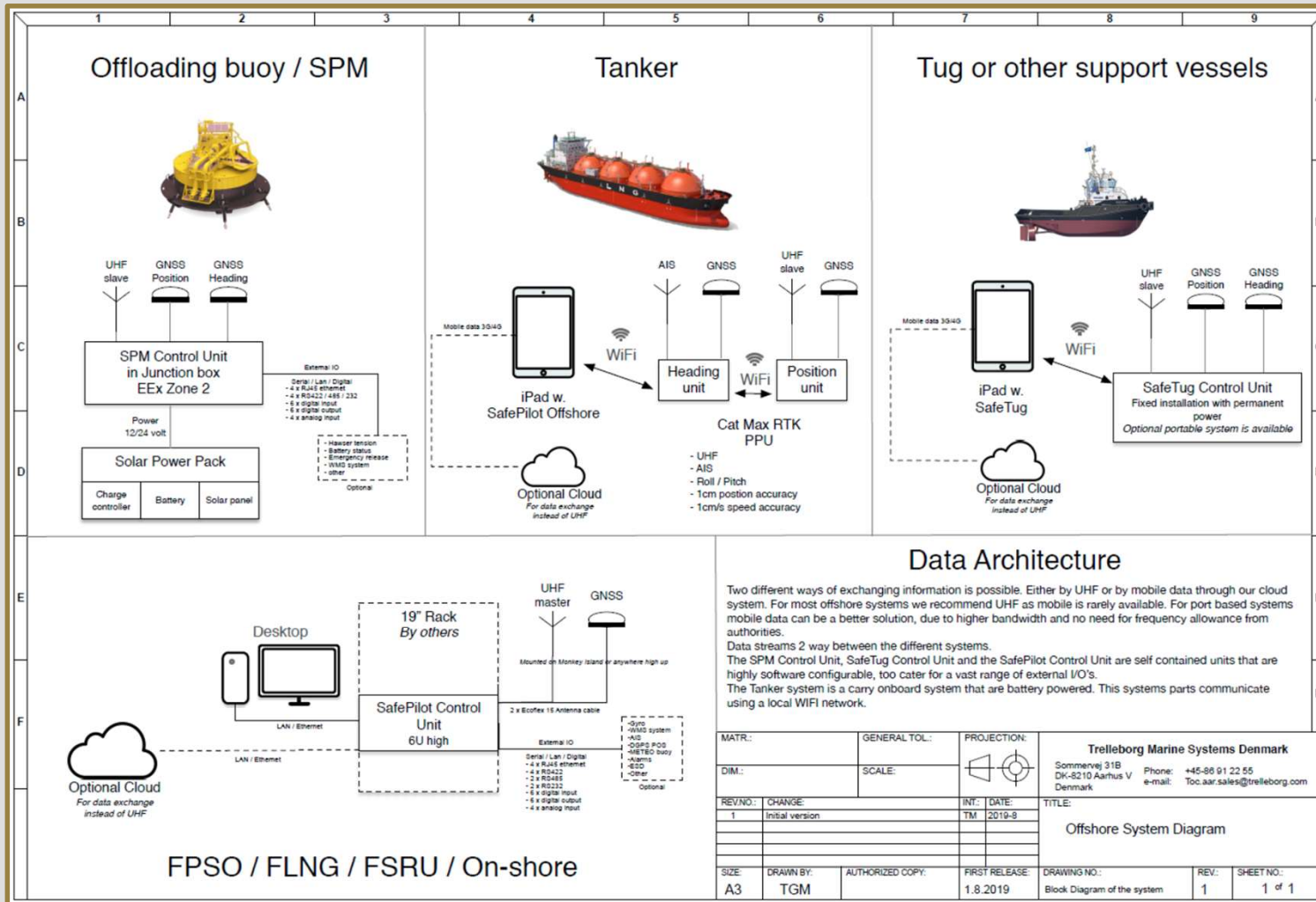
CAT PRO Modules – Locks





SafePilot Offshore Video



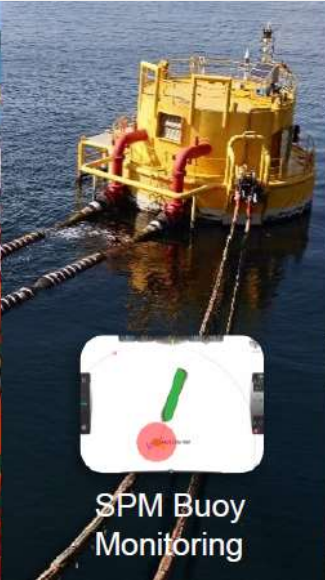


SafePilot Offshore

Multiple Solutions



High Accurate Navigation



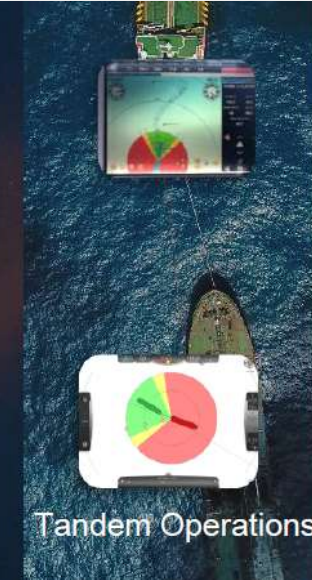
SPM Buoy Monitoring



Turret Monitoring



Manifold Alignment



Tandem Operations



STS operations

SafePilot CAT MAX



SafePilot Control Unit

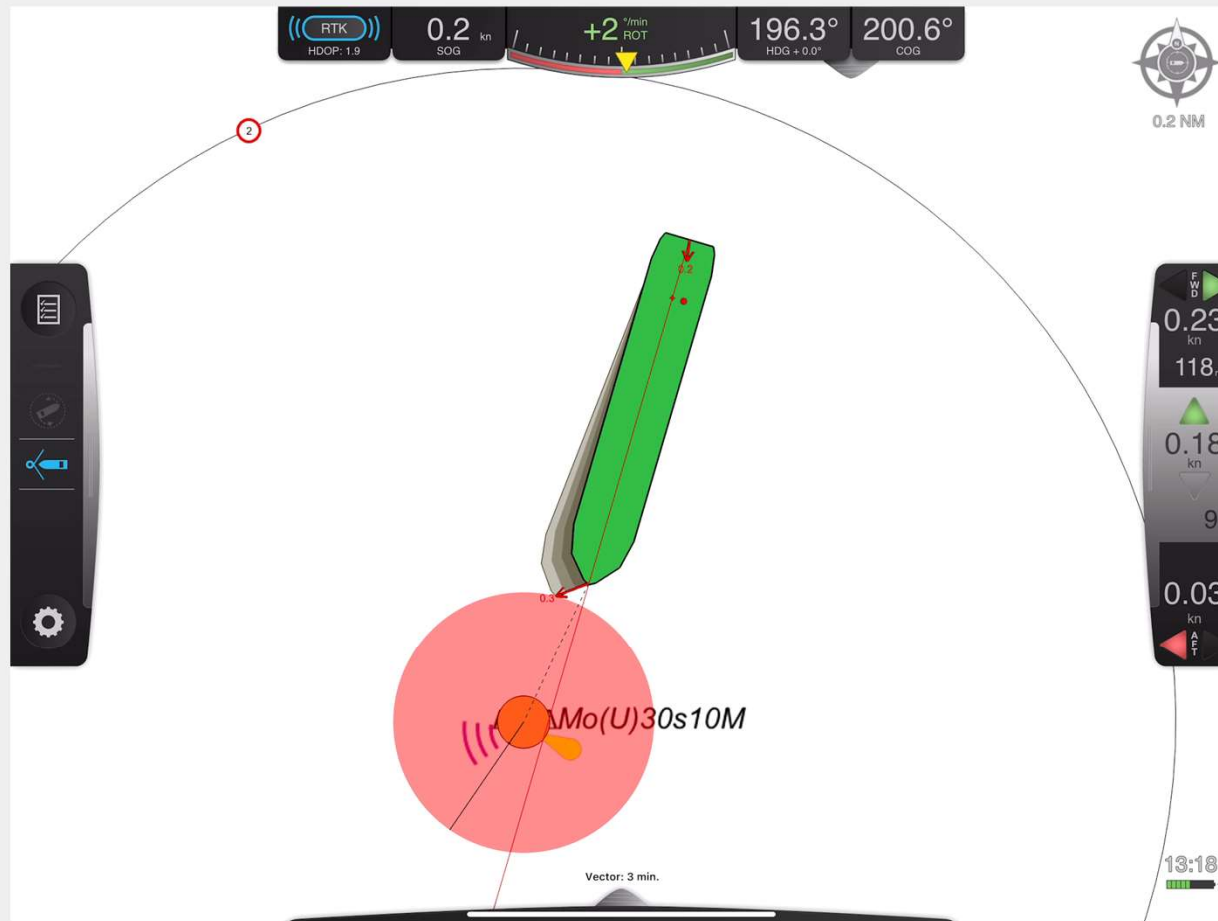


SafePilot Offshore

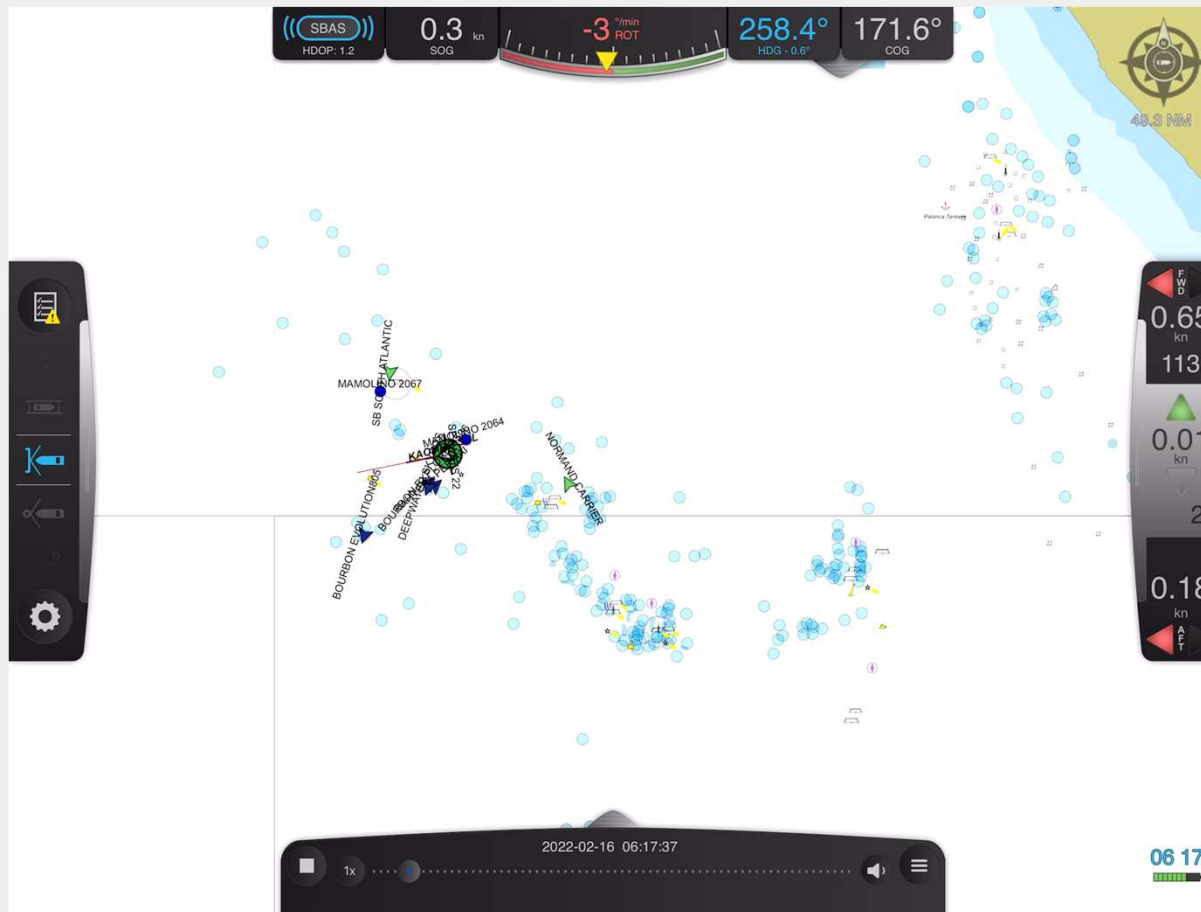
Software Demonstration – Chevron El Segundo – Multiple Anchorage



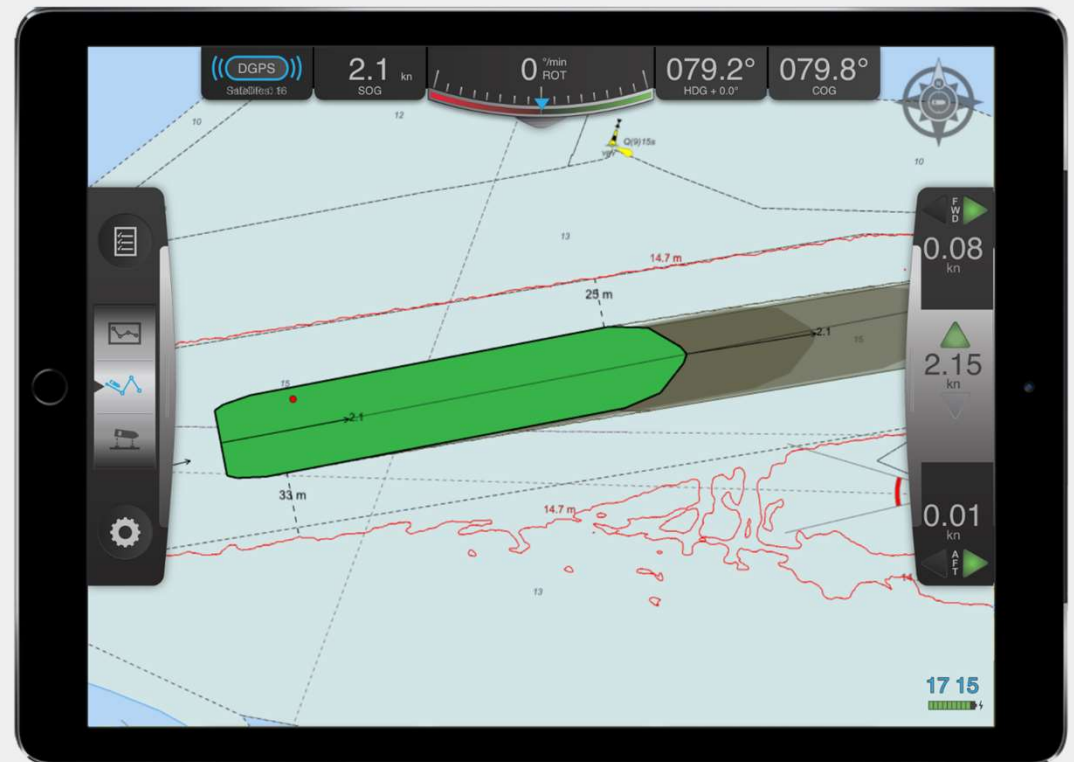
SPM buoy operation - SafePilot



Tandem LOADING Operation – SafePilot (Total Angola)

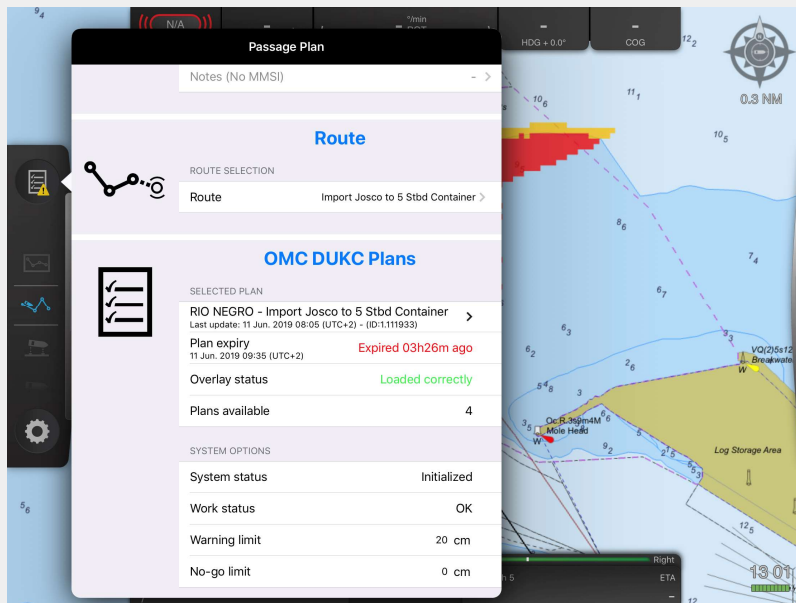


Real Time Under Keel Clearance



Real Time UKC

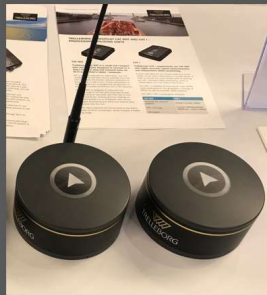
Real Time Under Keel Clearance - OMC DUKC Integration



Passage planning - UKC Plans

Real Time Under Keel Clearance - Long Beach

3D NAV. SYSTEM

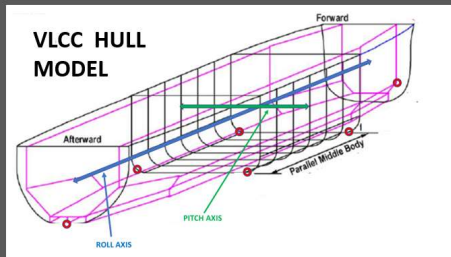


MULTI-BEAM BATHYMETRIC CHART



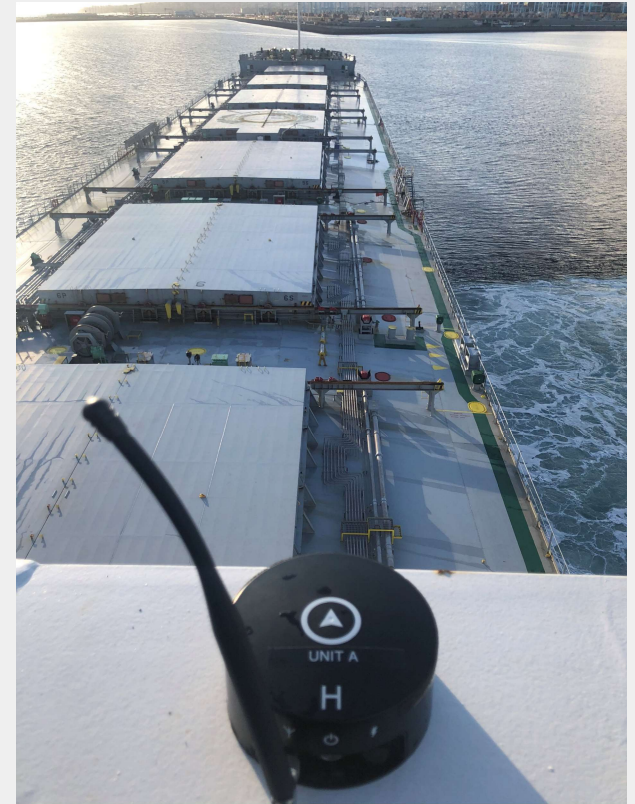
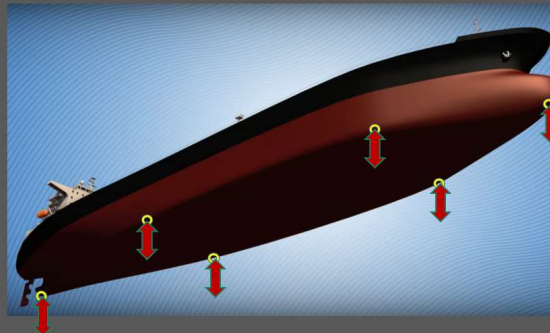
+

DIGITAL HULL MODEL

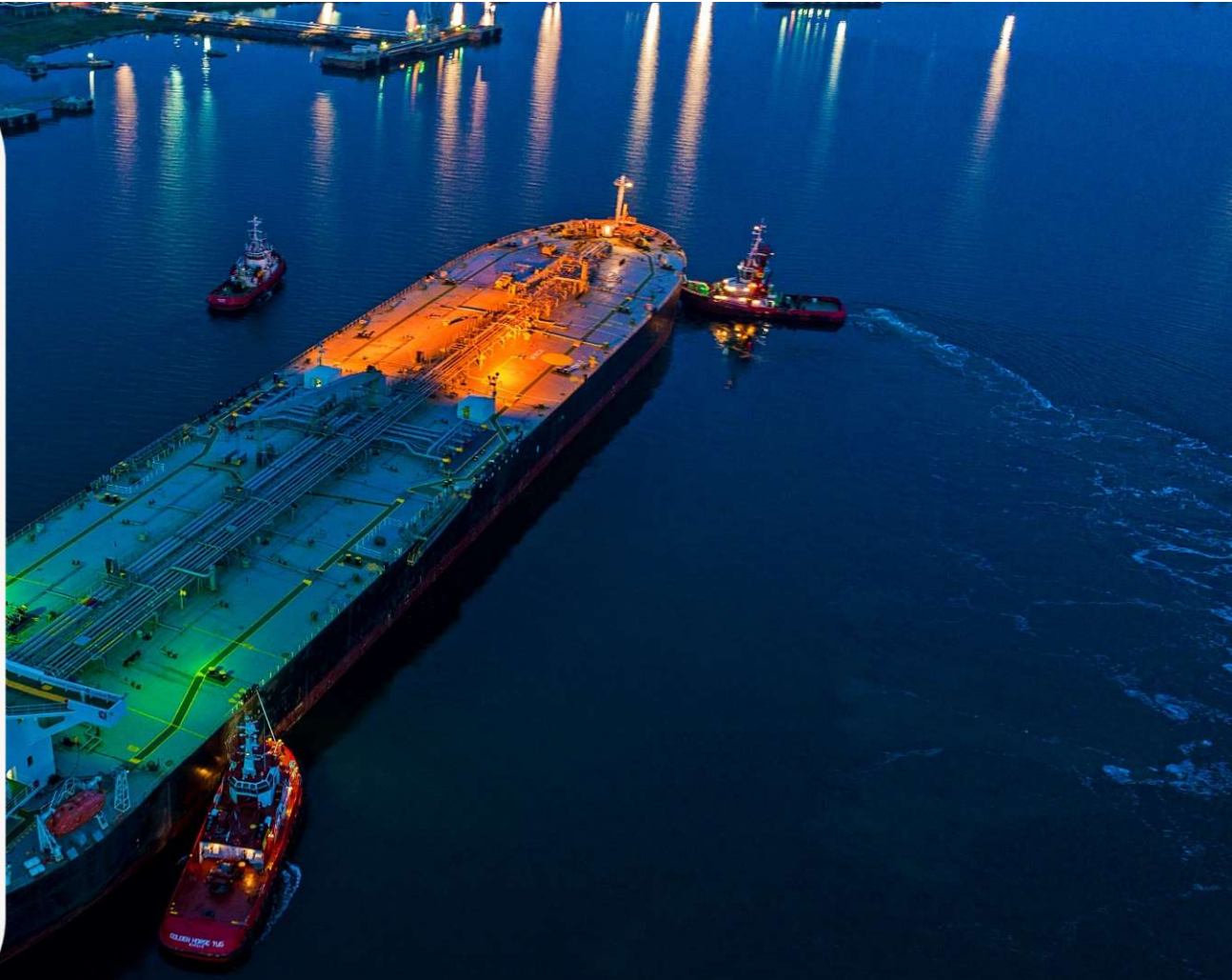


=

REAL-TIME UKC MONITORING











SafeTug





SafeTug - Finland



SafeTug in Operation



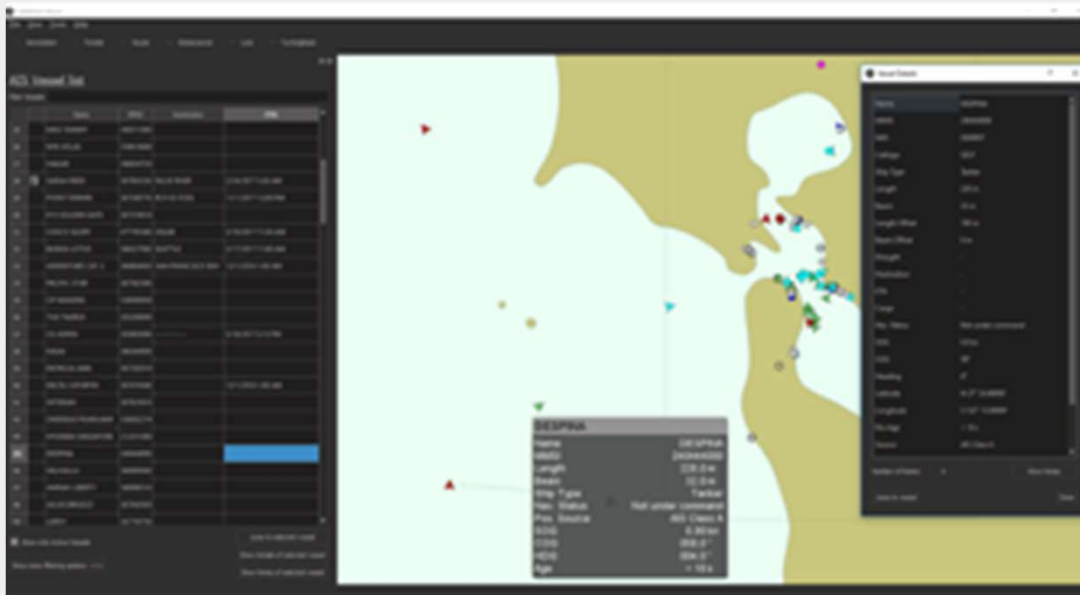
SafeTug Assisting Vessel Turn



SafeTug Assisting Vessel Docking

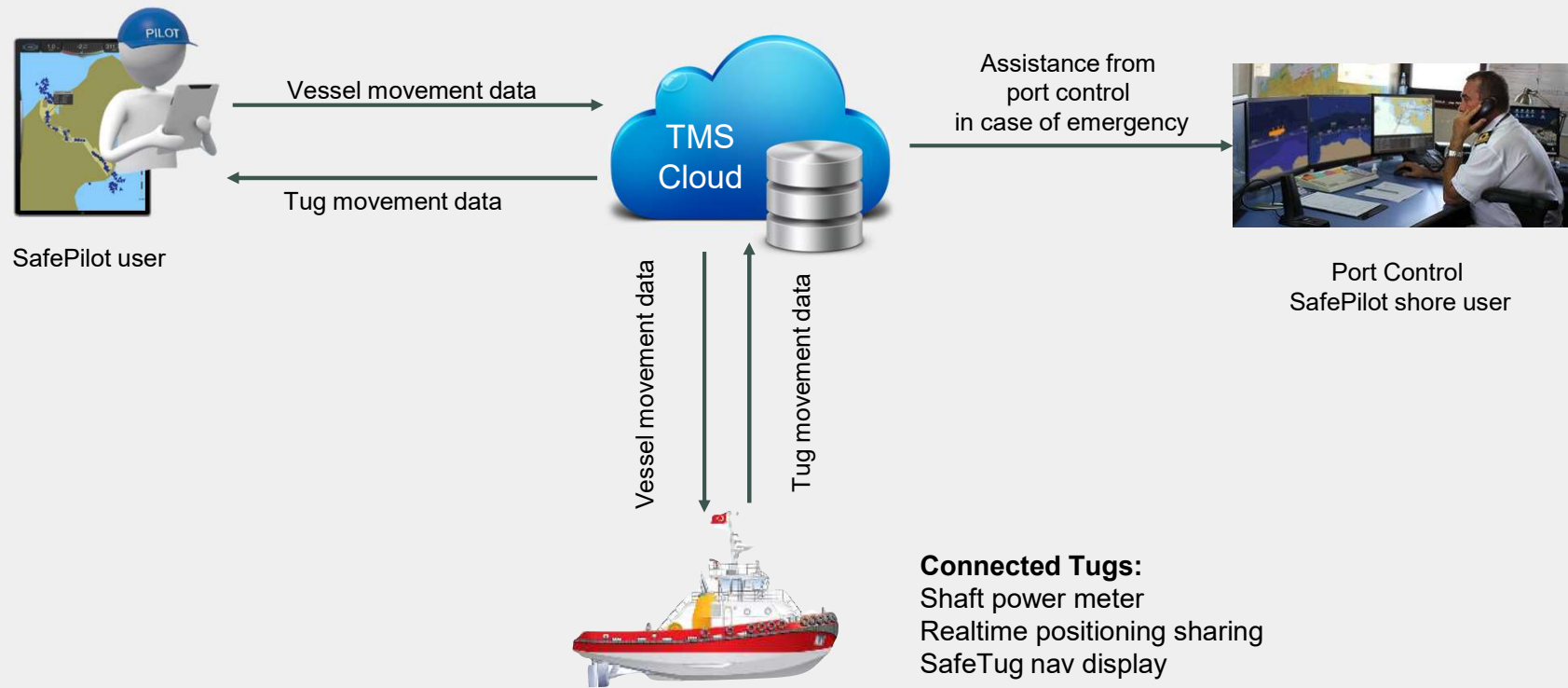


SafePilot Shore System



- Shore based monitoring
- Annotation sharing
- AIS / VTS integration
- Chart management
- Vessel management
- Etc...

SafeTug / SafePilot system



Connected Tugs:
Shaft power meter
Realtime positioning sharing
SafeTug nav display

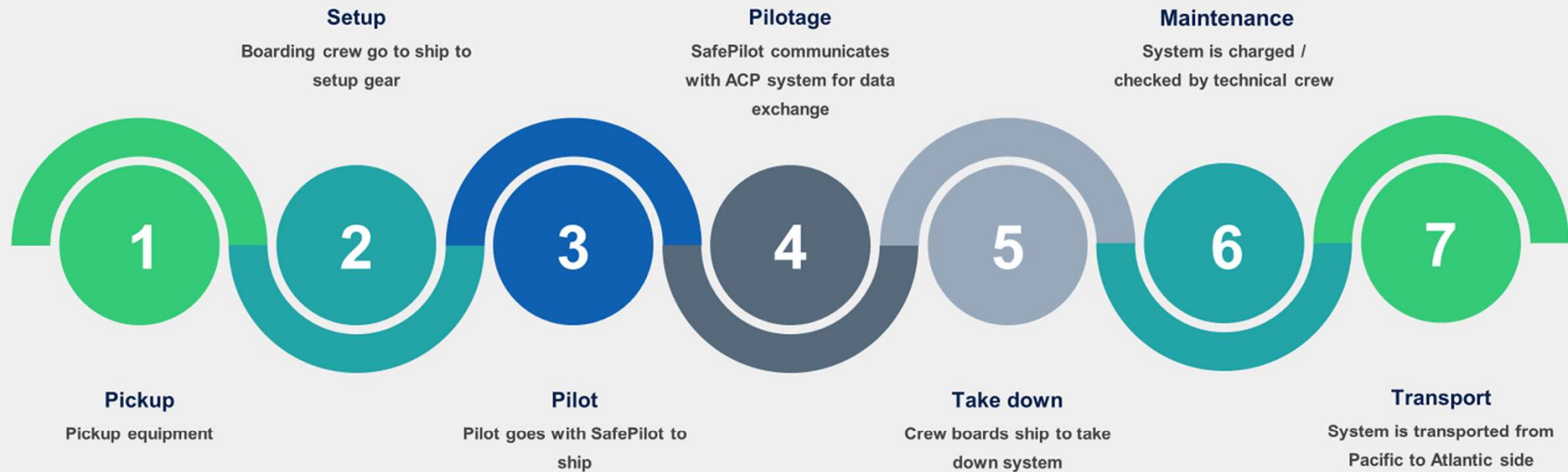


Navigation & Piloting By Trelleborg

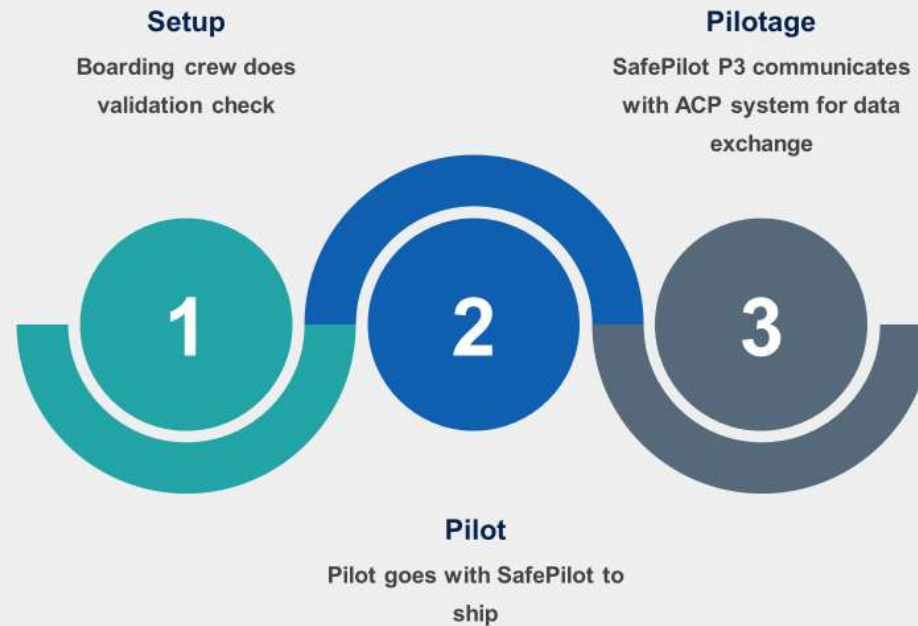


Smarter solutions for efficient operations

Conventional way of Pilotage through the Panama Canal



New way of Pilotage through the Panama Canal



SafePilot P3

Features

- Cm accuracy
- 1 sec update rate
- Black out battery powered
- Motion sensor
- Wifi to local display
- UHF transponder
- AIS receiver
- Dual antenna GNSS
- Jamming / spoofing detection



SafePilot P3

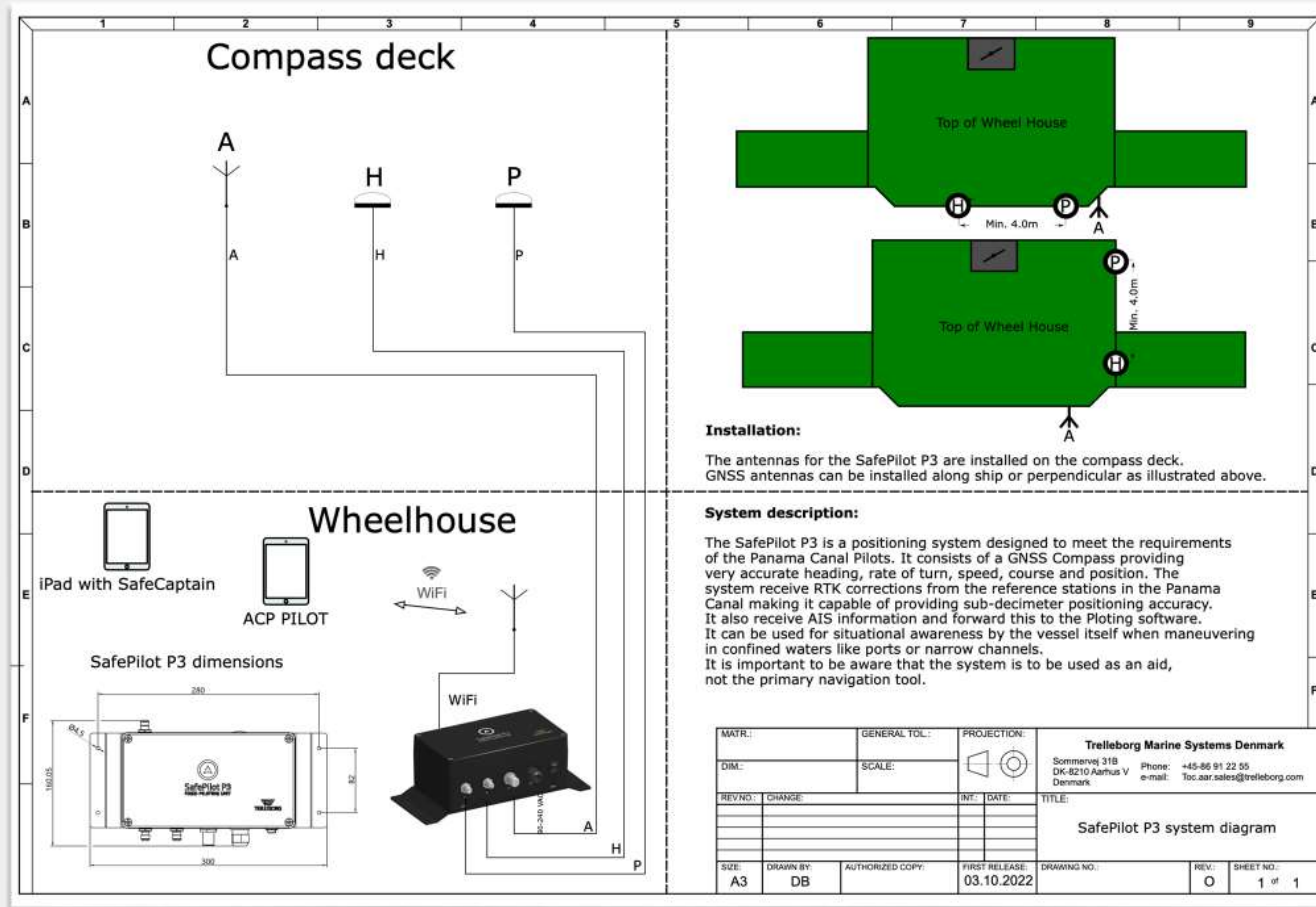
Contents

- 2 pcs. Wi-Fi antenna – 3dBi and 9dBi
- 1 pc. Wi-Fi antenna cable for roof installation(3m)
- 2 pc. GNSS antenna
- 1 pc. AIS antenna
- 3 pcs. Mounting bracket for antenna
- 1 pc. Coaxial cable for GNSS and AIS antennas (120m)
- 5 pcs. TNC-connector for GNSS coaxial cable
- 3 pc. N-Connector for AIS coaxial cable
- 7 pc. Cable tags
- 1 pc. Installation guide
- 1 pc. Type plate with QR code
- 1 pc. Cable ties (100 pcs)
- 1 pc. Coax Connector Crimp tool
- 1 pc. 10m Vulcanizing tape
- 1 pc. SafePilot P3 positioning unit
- 1 pc. iPad with SafeCaptain
- 1 pc. USB stick with related documentation

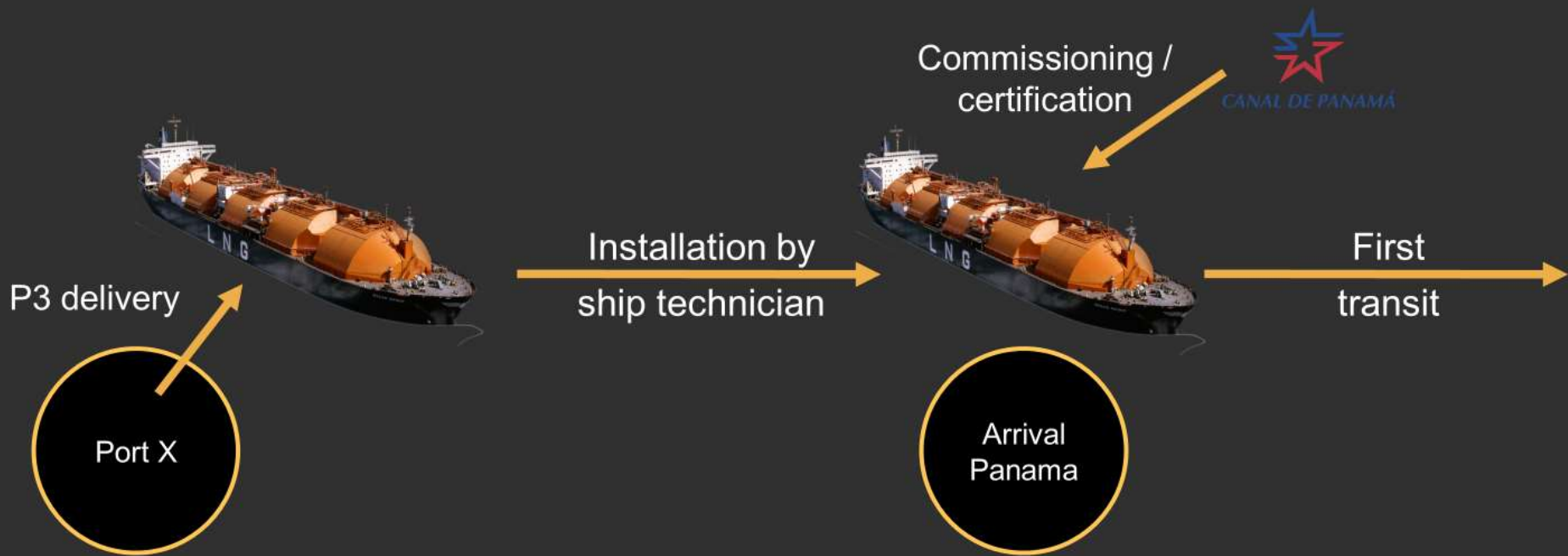


SafePilot P3

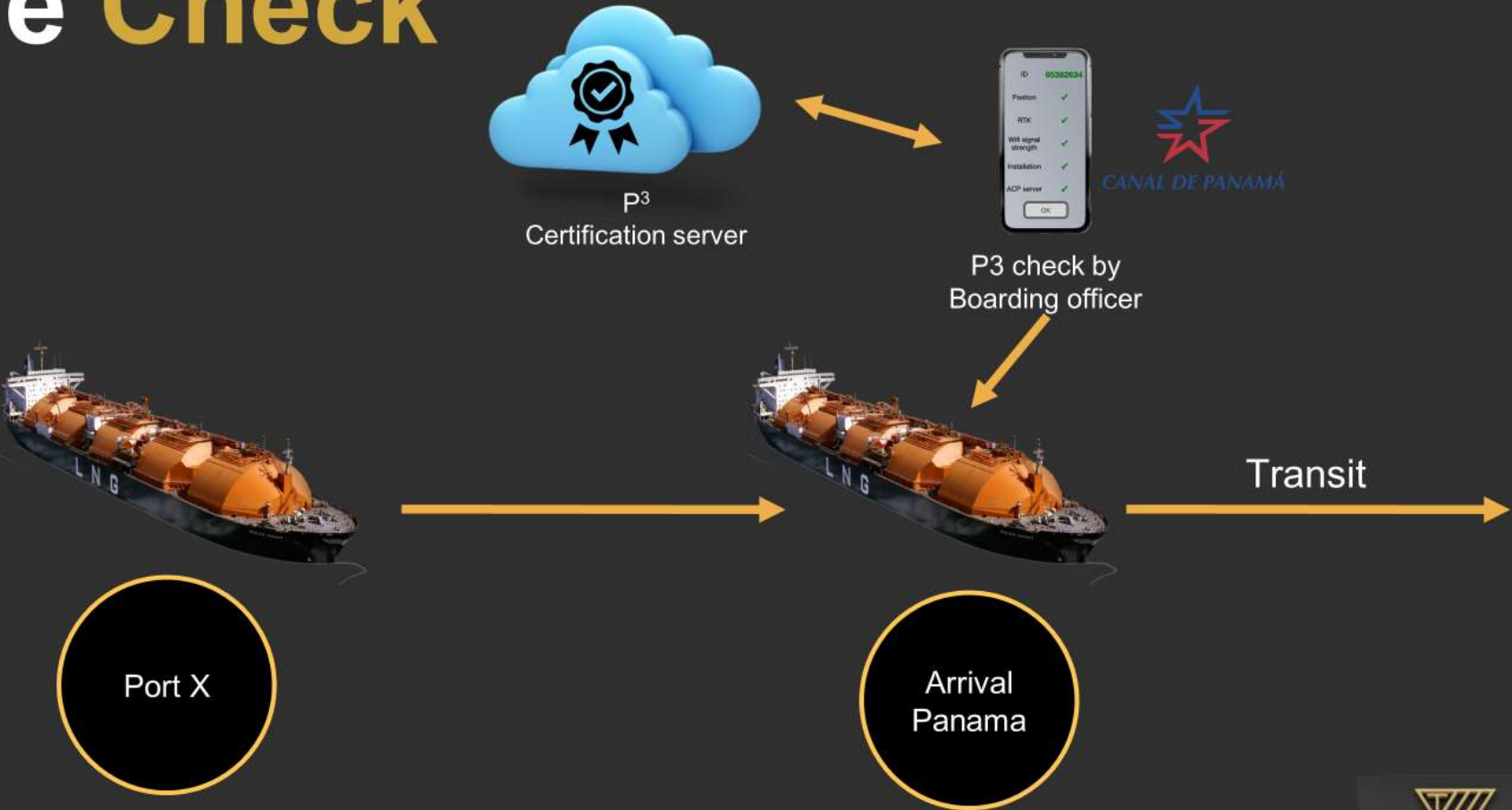
Technical



Installation



Pre Check



Buy or Lease?

2023

All in price per User/Pilot

- 4 Years, only 1 year fixed
- Hardware / Software
- All in price
- After 4 years all equipment will be upgraded to last version
- Software updates included
- 24/7 support by phone
- Annual maintenance check (Optional)



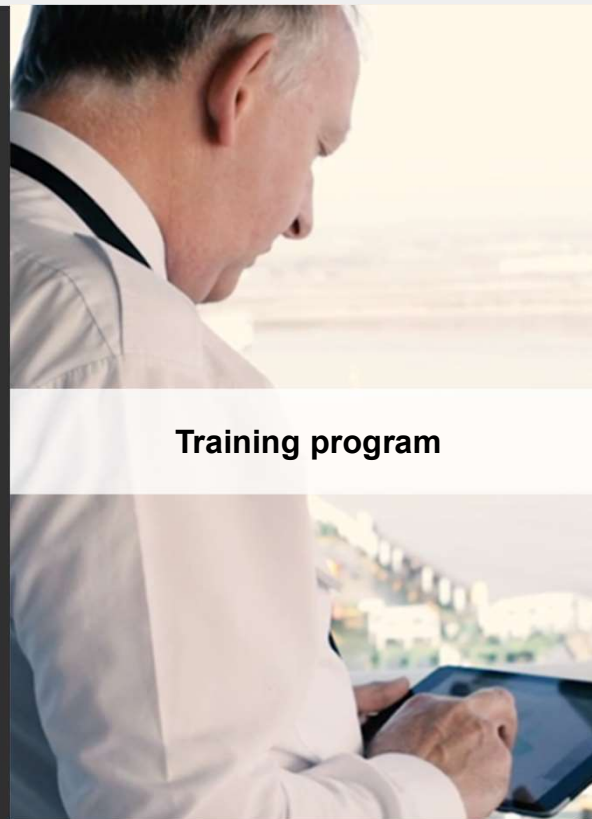
LEASE AGREEMENT

Agreement is between _____ [Landlord's Name]
_____ [Street Address] in the City of _____
hereinafter referred to as the "Landlord" and _____

Dedicated support

Throughout each project and beyond

- A certified pilot training program
- Remote and on-site training classes
- In-house technical staff with knowledge of hardware and software
- A remote factory acceptance test
- 24/7/365 emergency hotline
- On-site commissioning
- Yearly equipment checkup
- Dedicated workshops
- Spare parts



Training program



Maintenance program

After-sales Support Maintenance and Repair Services



24/7/365 hotline phone support directly to our technical staff



Unit swap to minimize downtime



Classroom training in DK.
Remote training. Onsite training.



Over-the-air updates.
Cloud hosting

3 service and support centers



Aarhus
Denmark



Melbourne
Australia

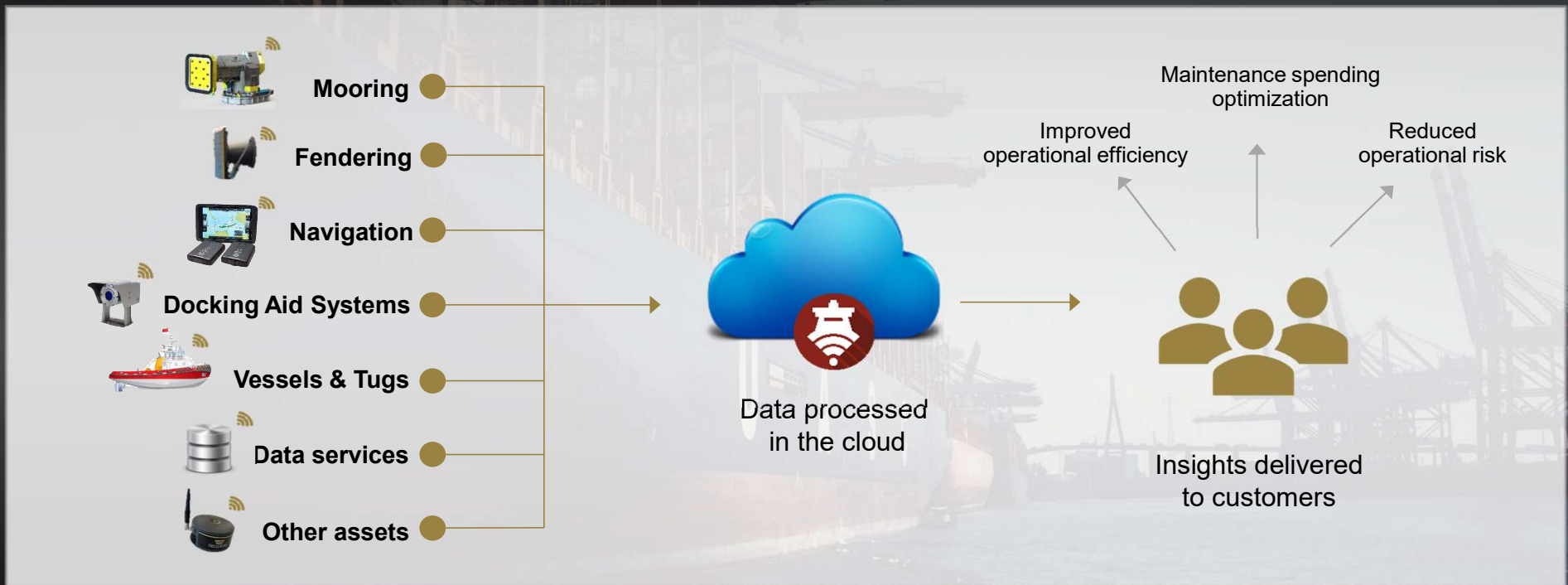


Houston
USA



SmartPort by Trelleborg

Connecting critical assets to provide key insights for customers



SmartPort by Trelleborg



SmartPort® 

MA39



Slide 60

ML1 Why don't we use the SmartPort visual we've purchased - the one we used in the 2022 desk calendar?
MeiLeng Lim, 12/2/2021

MA39 Done
Muge Alim, 7/2/2022



TRELLEBORG